

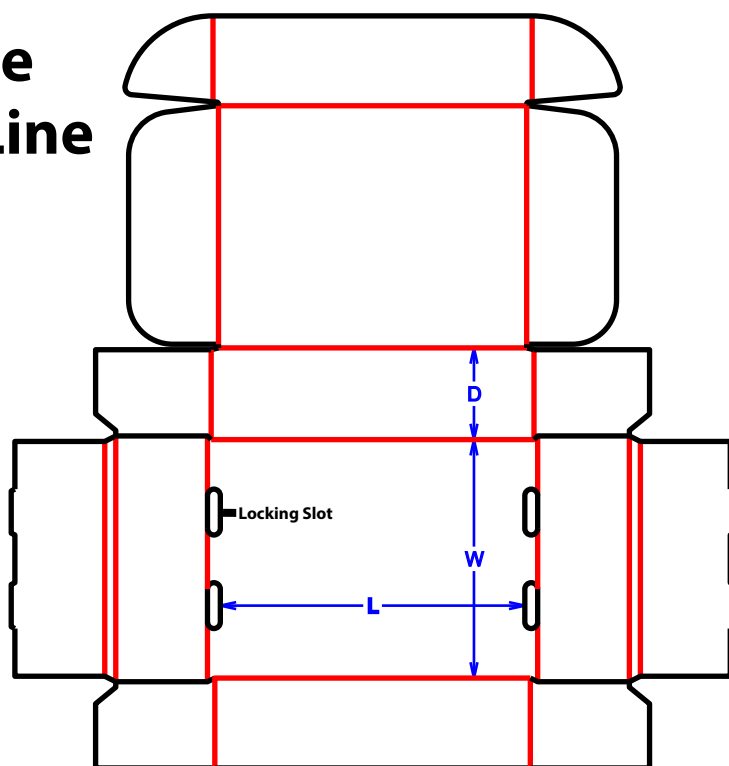


Mailers and Trays

F0427 Deluxe Mailer w/ Ears

Tooling Required

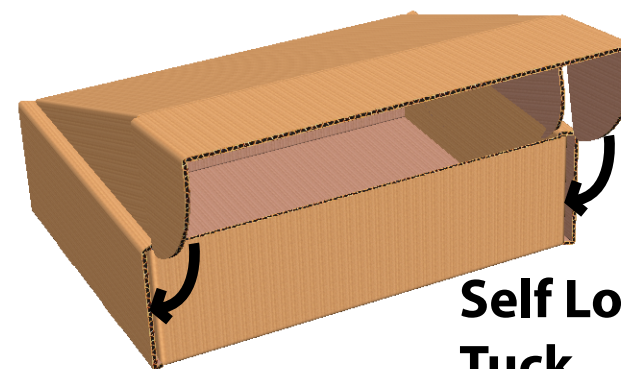
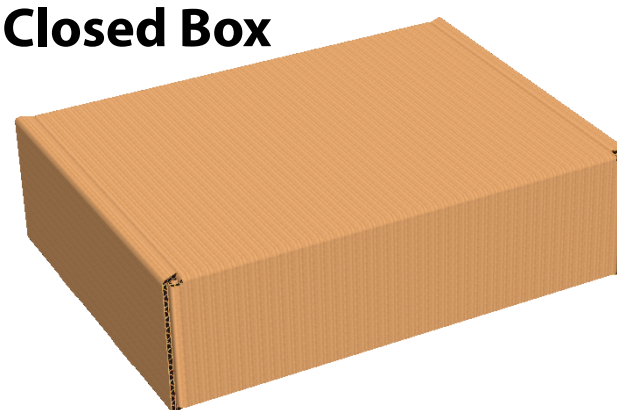
— - Cut Line
— - Score Line



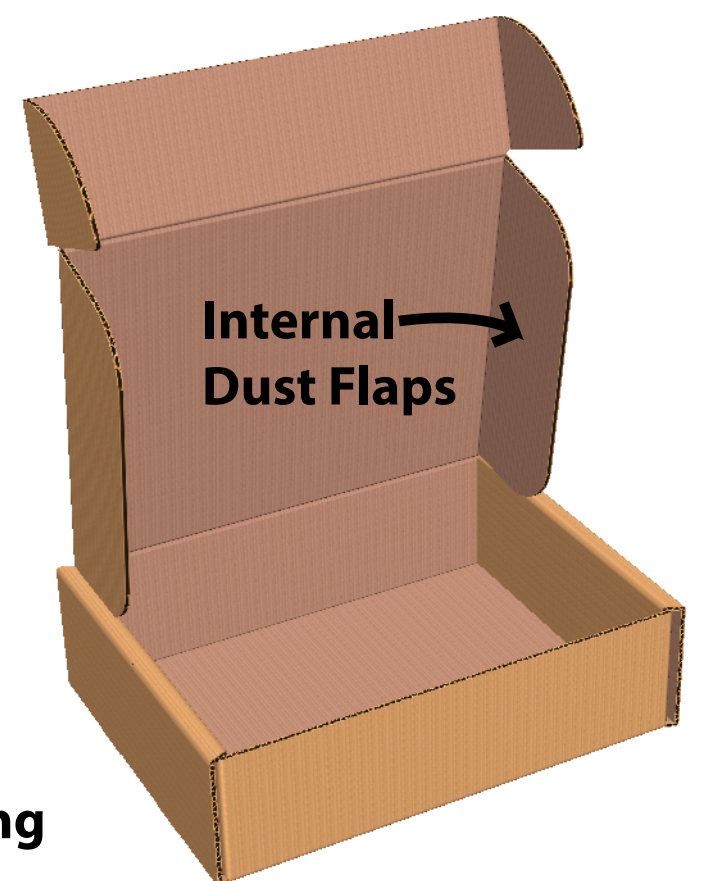
Deluxe Mailer

A non-glued die-cut carton that allows for quick setup and secure shipping for general and end-user applications. Additional flaps add strength to carton and help limit the number of outside dust particles that may enter the carton.

Closed Box



Self Locking Tuck

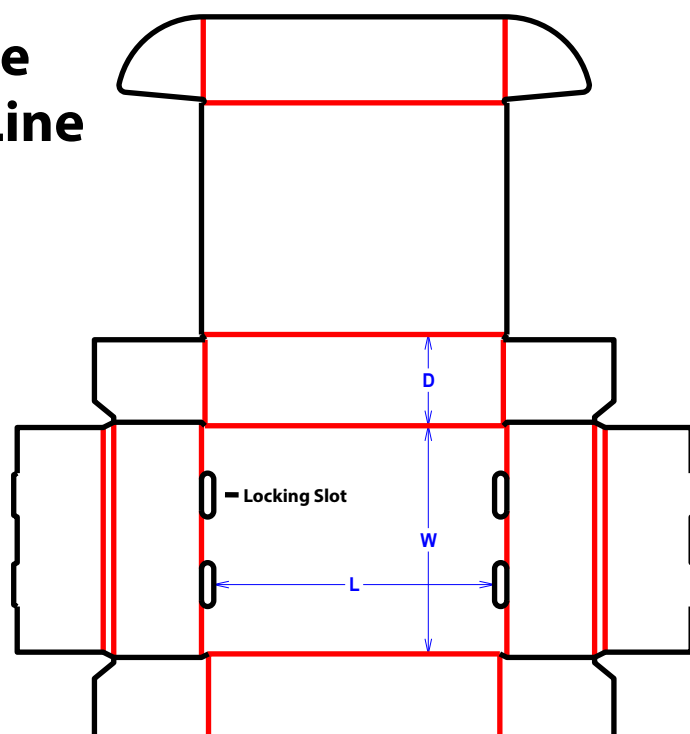


Internal Dust Flaps

F0427-A Mailer - Ears /No Dust

Tooling Required

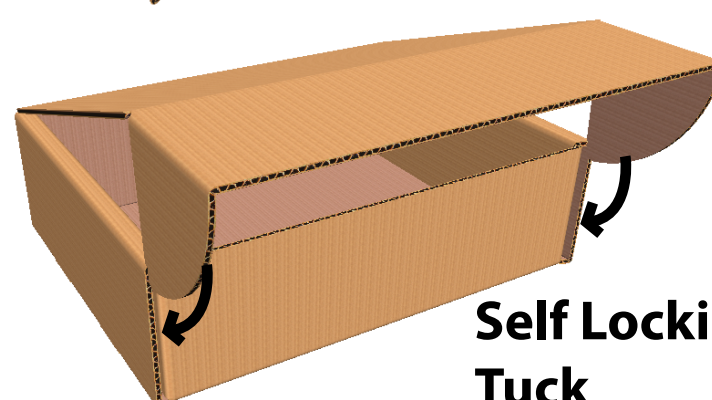
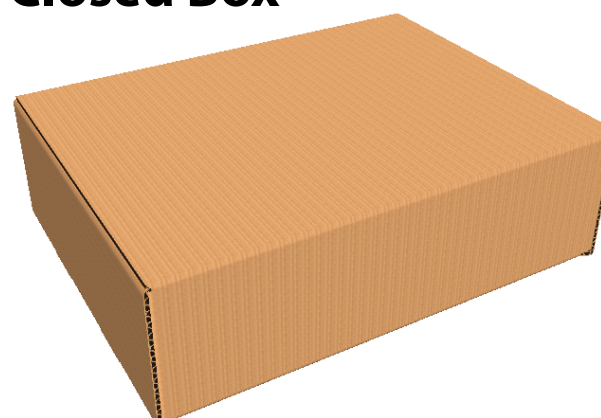
— - Cut Line
— - Score Line



Mailer

A non-glued die-cut carton that allows for quick setup and secure shipping for general and end-user applications. Locking ears fold into slot, allowing for more secure shipping.

Closed Box



Self Locking Tuck

