

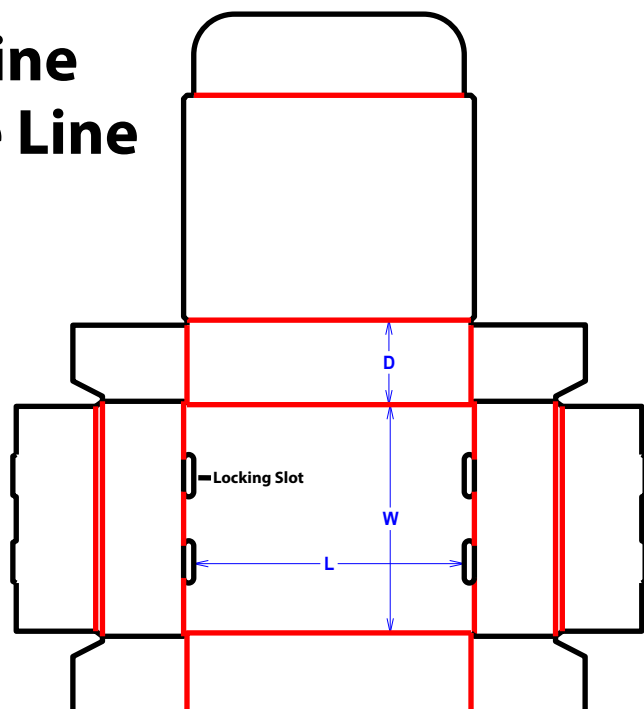


Mailers and Trays

F0421 Front Tuck Mailer

Tooling Required

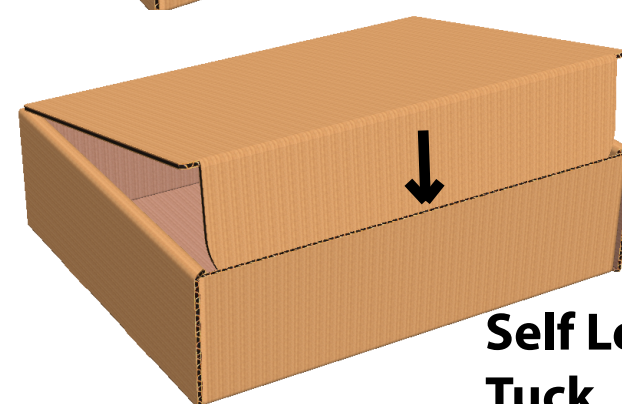
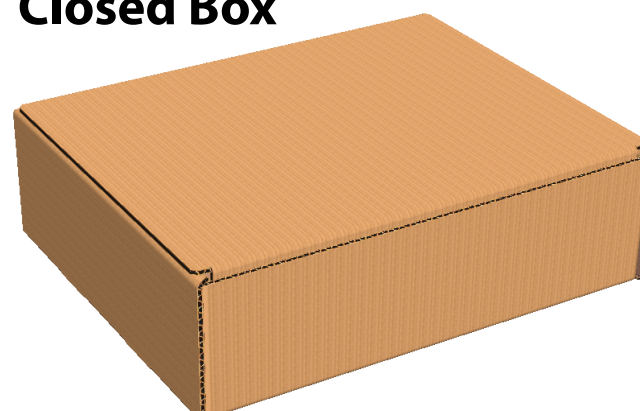
— - Cut Line
— - Score Line



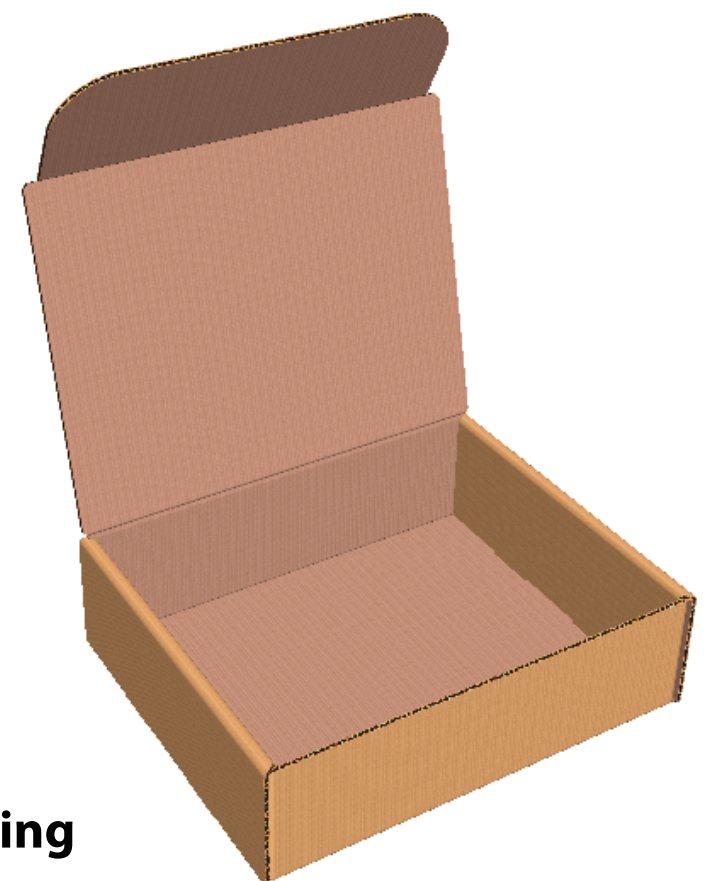
Front Tuck Mailer

A non-glued die-cut carton that allows for quick setup and secure shipping for general and end-user applications. Self locking tuck slides into the front of the carton when folded, requiring only one piece of tape to ship.

Closed Box



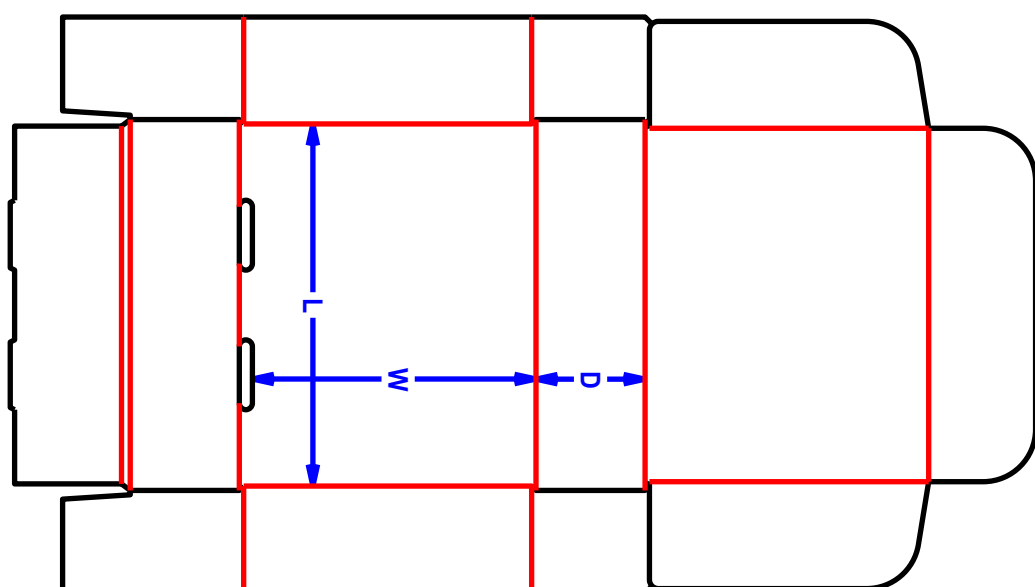
Self Locking Tuck



F0426 Front Locking Deluxe Mailer

Tooling Required

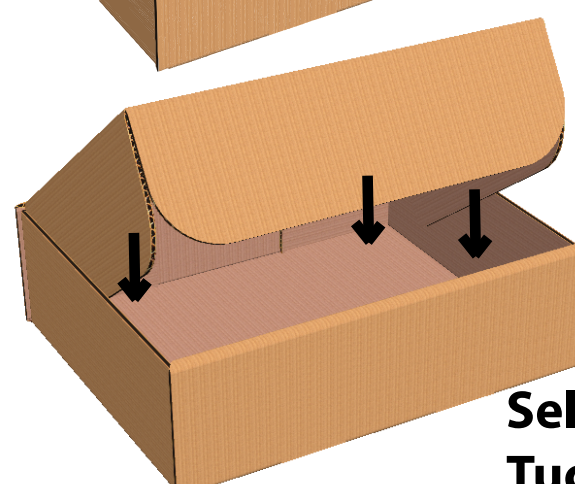
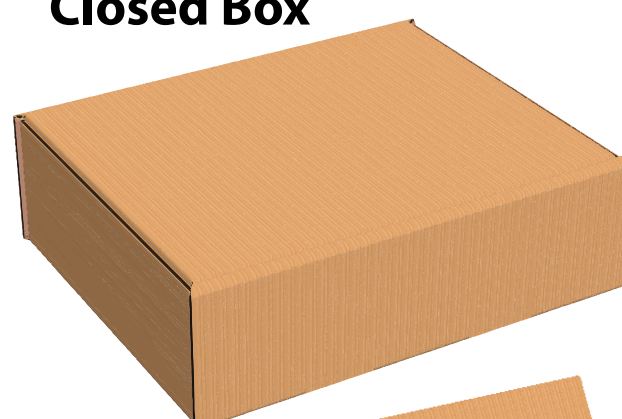
— - Cut Line
— - Score Line



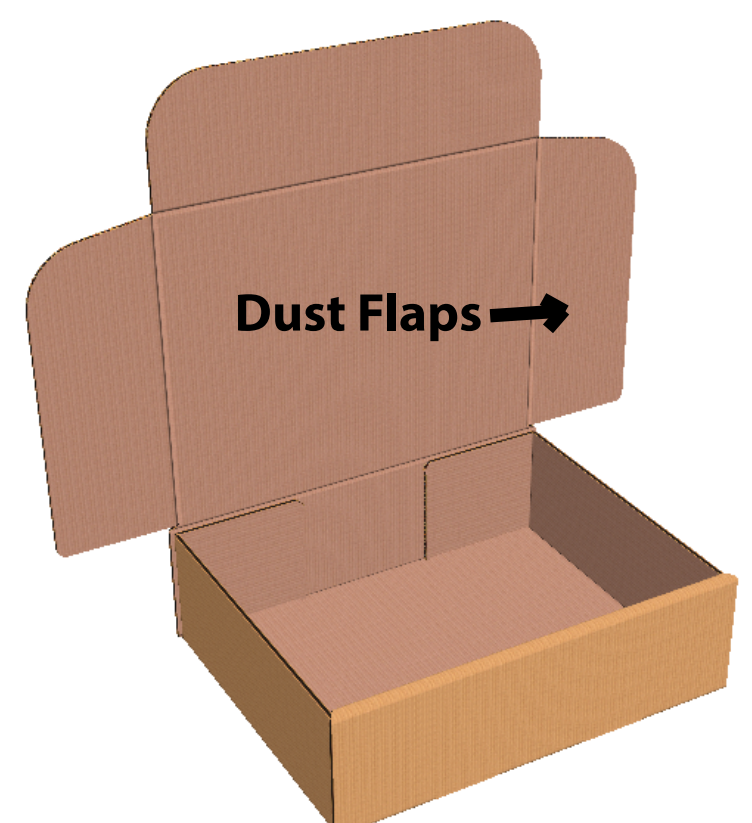
Front Locking Deluxe Mailer

A non-glued die-cut carton that allows for quick setup and secure shipping for general and end-user applications. Additional flaps add strength to carton and help limit the number of outside dust particles that may enter the carton.

Closed Box



Self Locking Tuck



Dust Flaps →