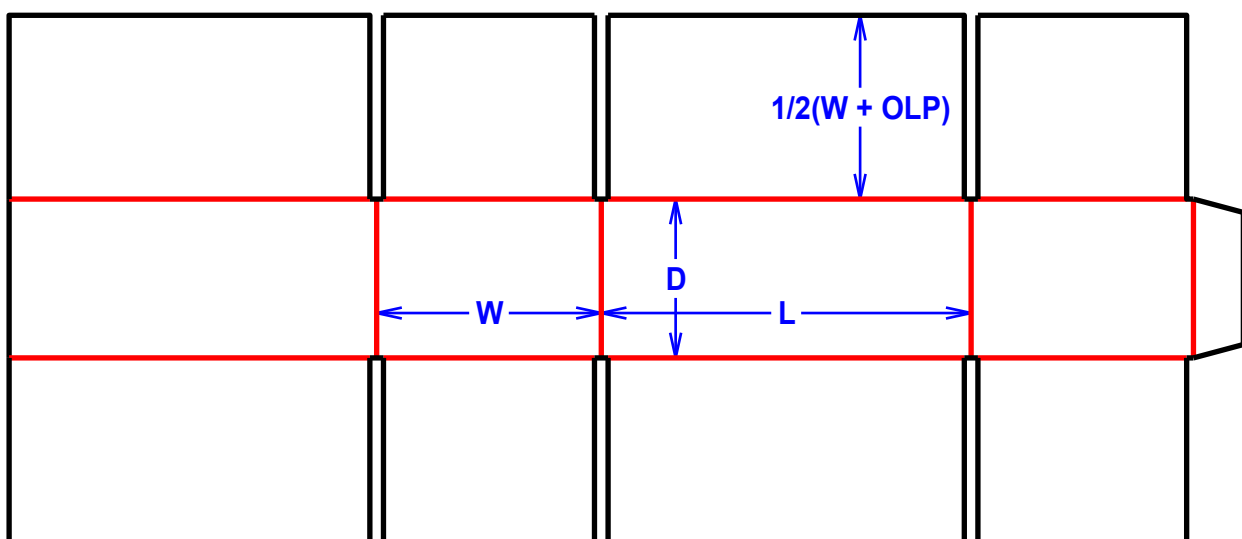


# Slotted Cartons

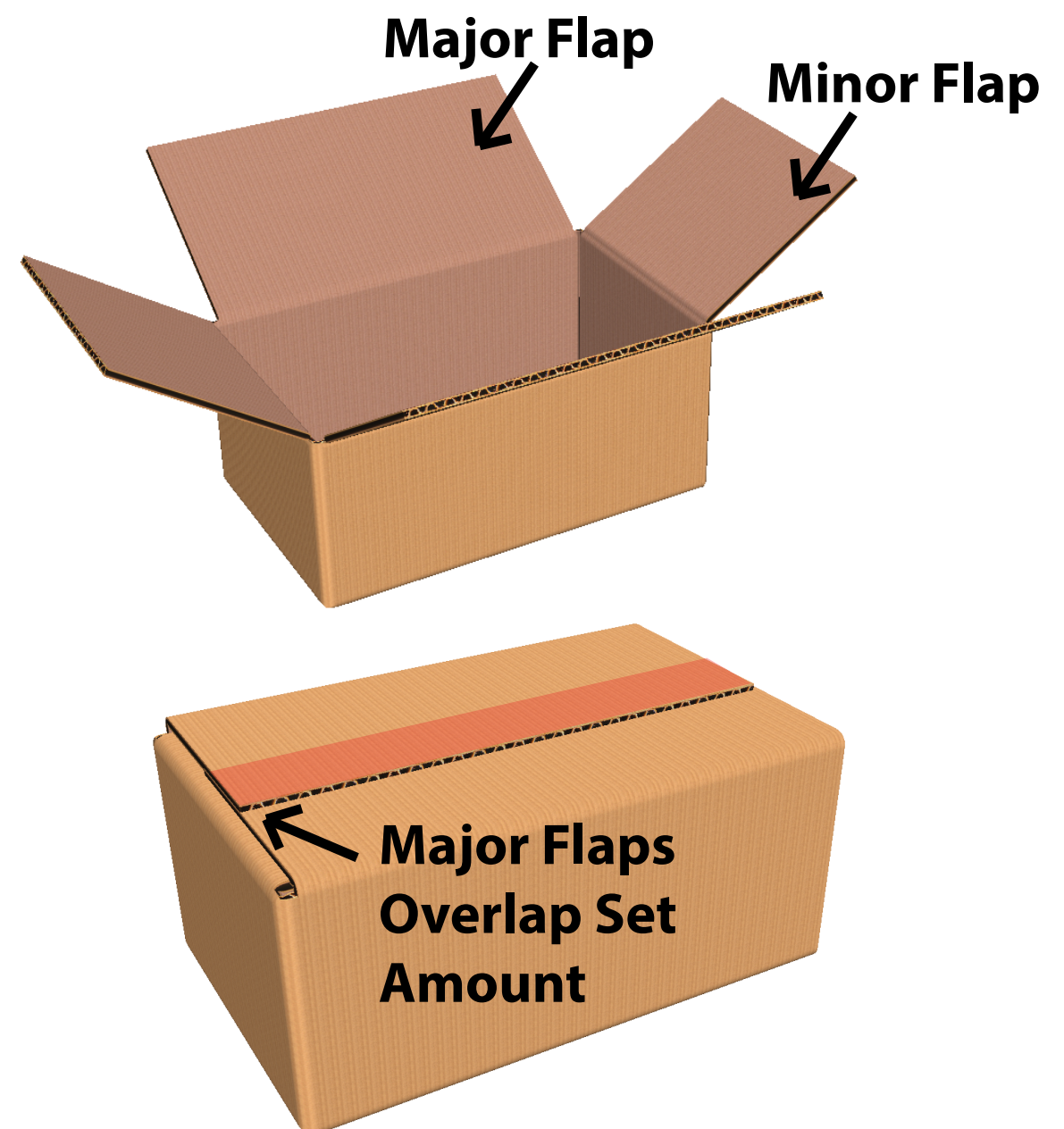
## F0202 POL

 - Cut Line  
 - Score Line



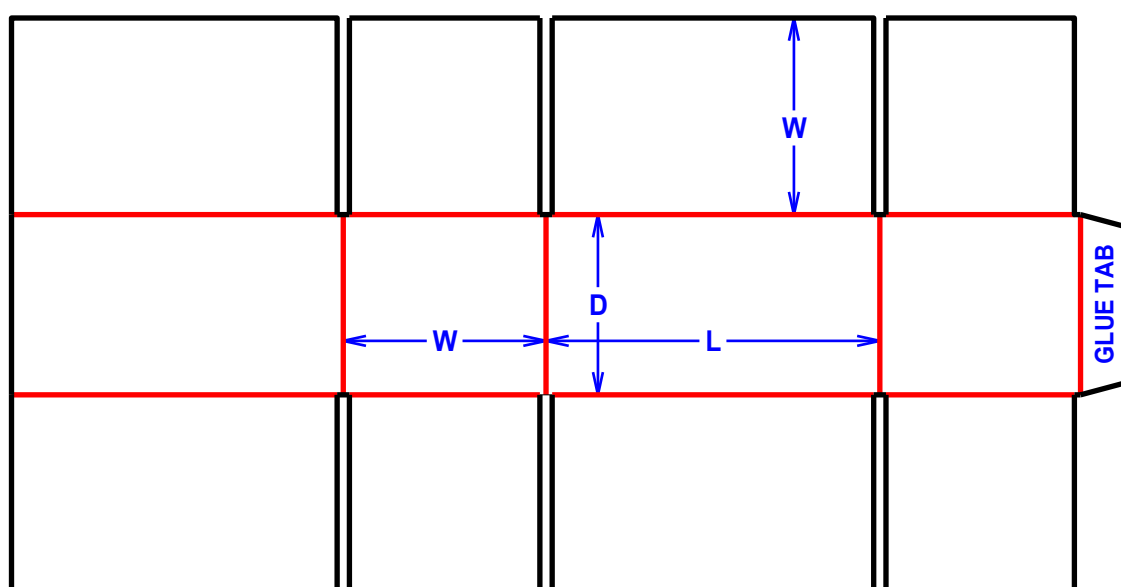
### POL - Partial Overlap

A container with major flaps that overlap each other a predetermined amount over the center of the box. Overlap helps protect product from knife opening. Minor flaps may overlap.



## F0203 FOL

 - Cut Line  
 - Score Line



### FOL - Full Overlap

A container with flaps equal to the width of the box, allowing for the major flaps to fully overlap the width for taping. Adds strength to the corners and helps protect product from knife opening. Minor flaps may overlap.

