

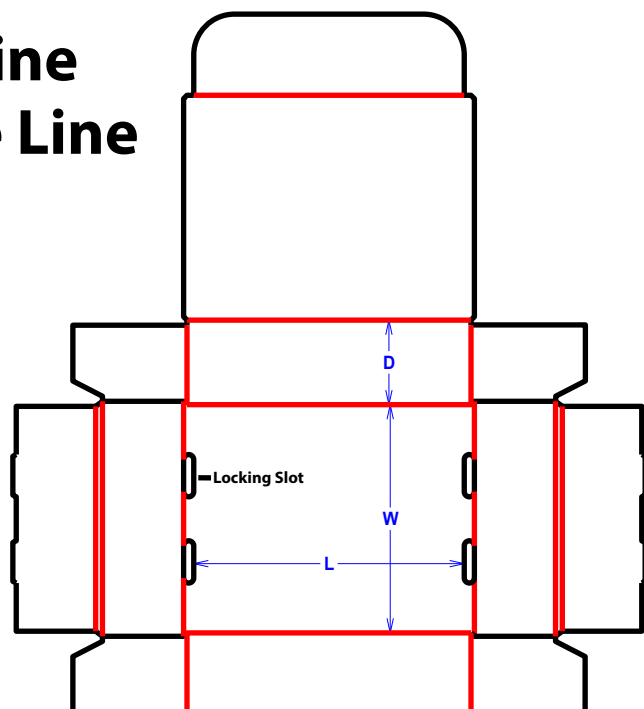


Mailers and Trays

F0421 Front Tuck Mailer

Tooling Required

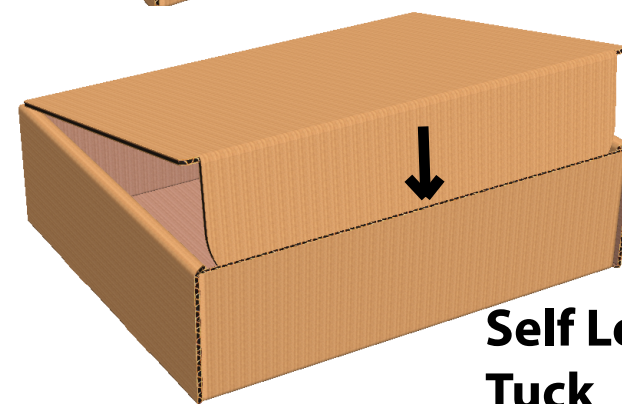
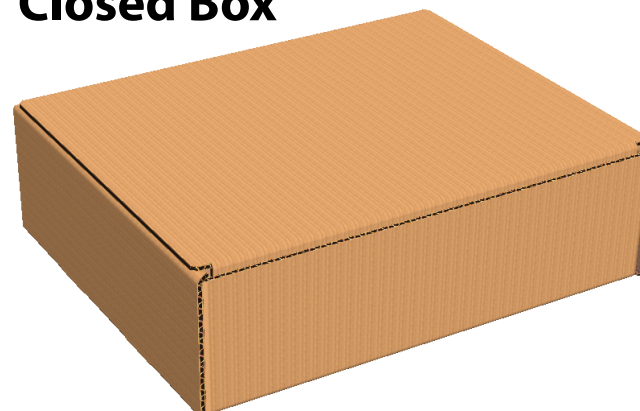
— - Cut Line
— - Score Line



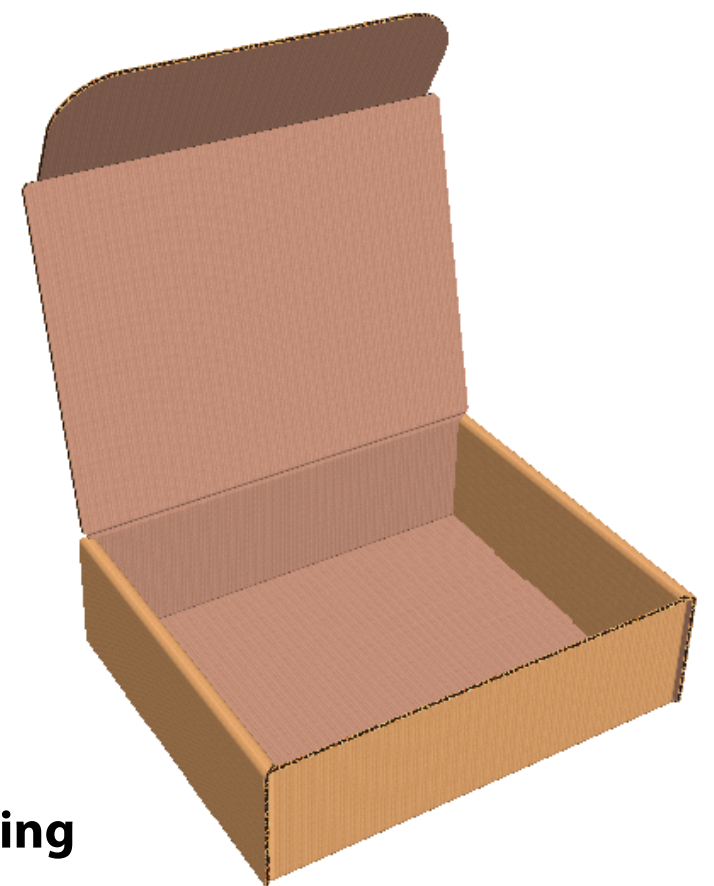
Front Tuck Mailer

A non-glued die-cut carton that allows for quick setup and secure shipping for general and end-user applications. Self locking tuck slides into the front of the carton when folded, requiring only one piece of tape to ship.

Closed Box



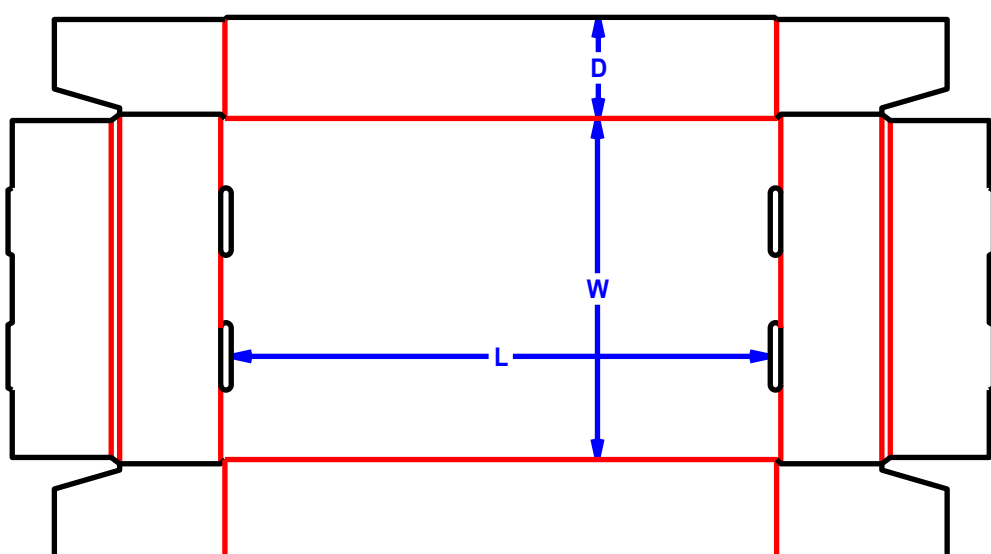
Self Locking Tuck



F0422 D/C Tray

Tooling Required

— - Cut Line
— - Score Line



D/C Tray

A self locking tray utilized as a holder for certain product, or as a lid to seal an opened loaded carton. Easy roll over scored help erect the tray in two steps, without requiring additional tape or gluing.

