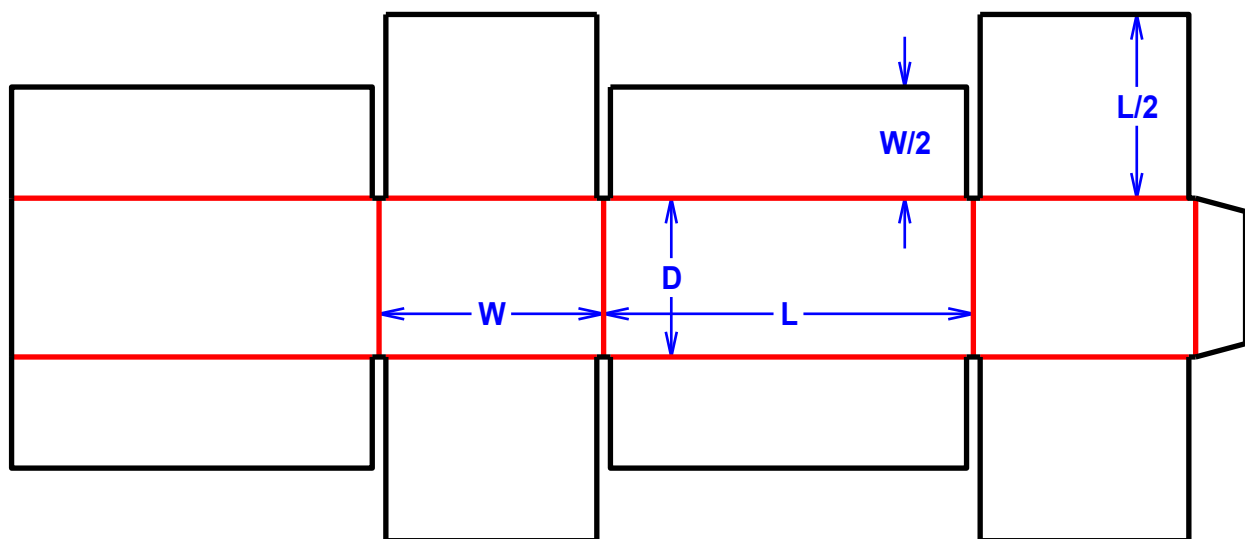


# Slotted Cartons

## F0204 CSSC

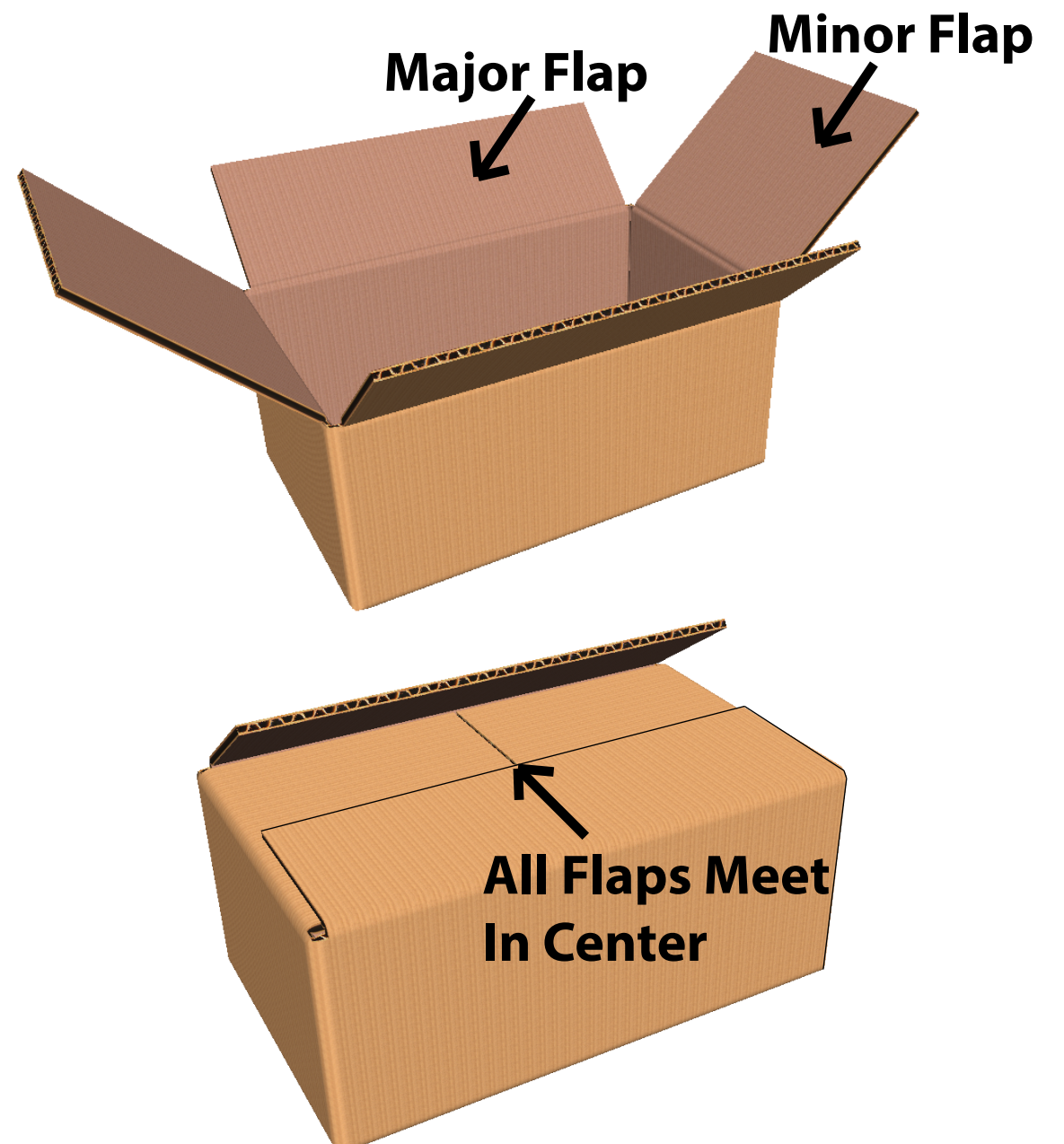
Tooling Required

— - Cut Line  
— - Score Line



### CSSC - Center Special Slotted Container

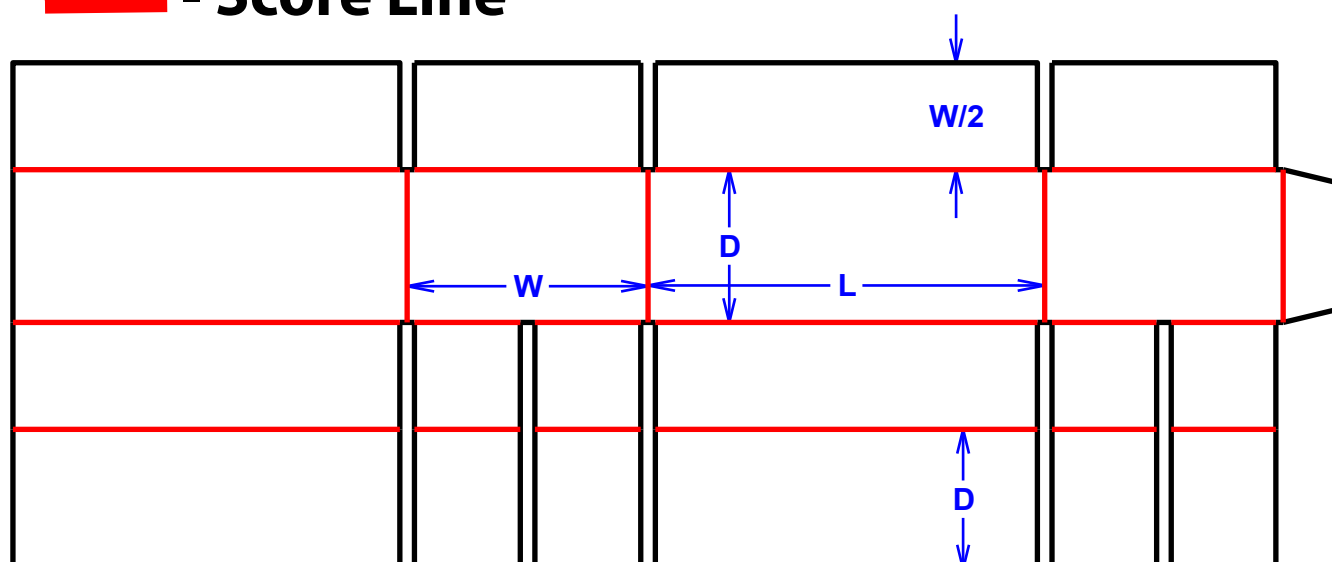
A container in which minor and major flaps meet in the center of the box. Extended minor flaps eliminate unprotected space between minor flaps, helping protect product from knife opening.



## F0208 Flap Partition

Tooling Required

— - Cut Line  
— - Score Line



### RSC Top / Flap Partition Bottom

A container with bottom flaps that fold into the box, creating built in partitions. Can be used with only major flaps to split the width in half, or with the minor flaps to create a total of 4-6 cells. Top flaps meet like an RSC.

Top View - Assembled

Bottom View - Assembling

