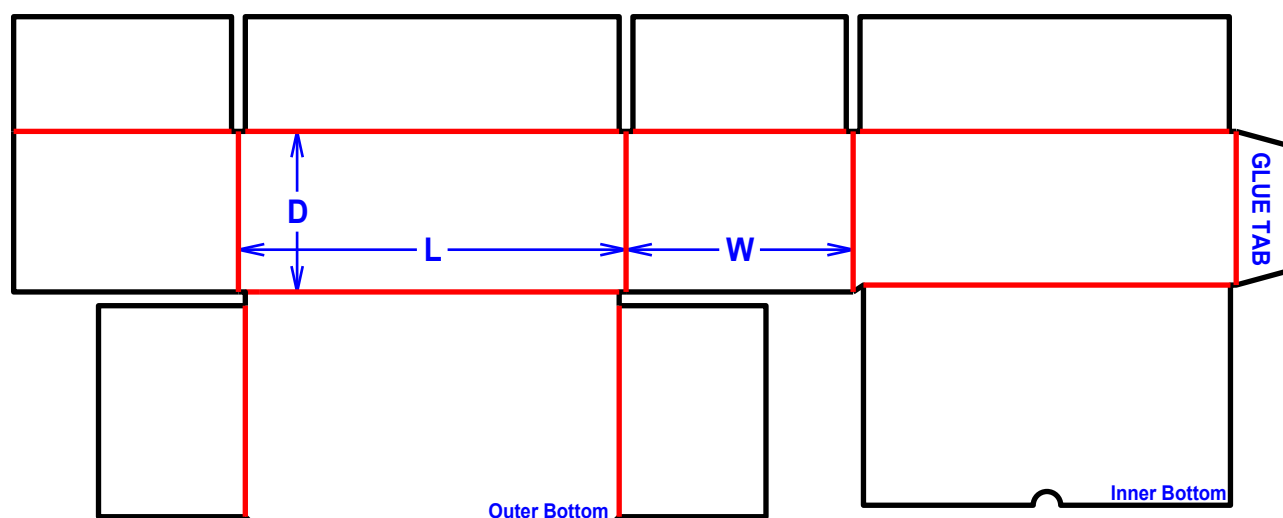


# Slotted Cartons

## F0225 File Box Bottom

Tooling Required

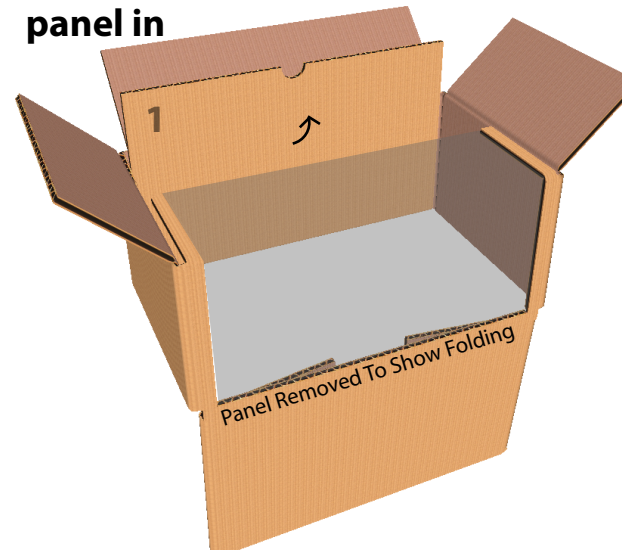
— - Cut Line  
— - Score Line



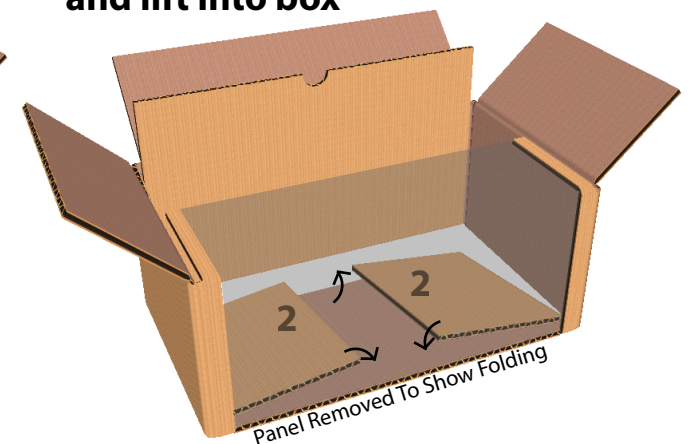
### File Box Bottom

A container with a die cut bottom, allowing for an interlocked flat bottom without needing tape. Top style can vary depending on customer use. Due to self locking nature, this style may not be suitable for heavy loads.

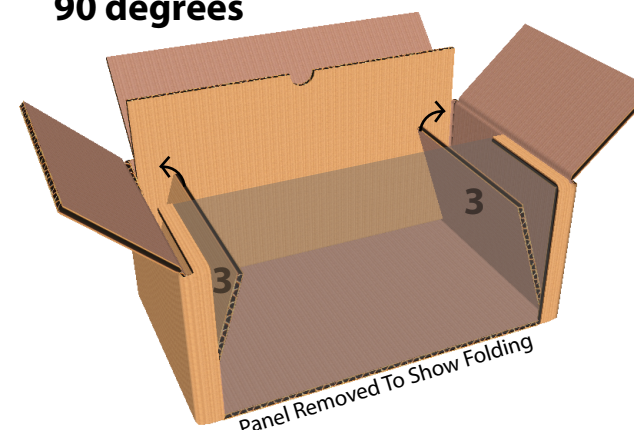
1. Square carton and fold panel in



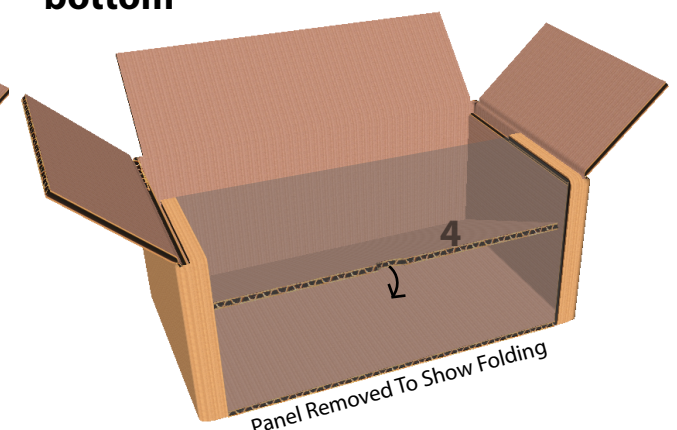
2. Fold down minor flaps and lift into box



3. Lift minor flaps up to 90 degrees



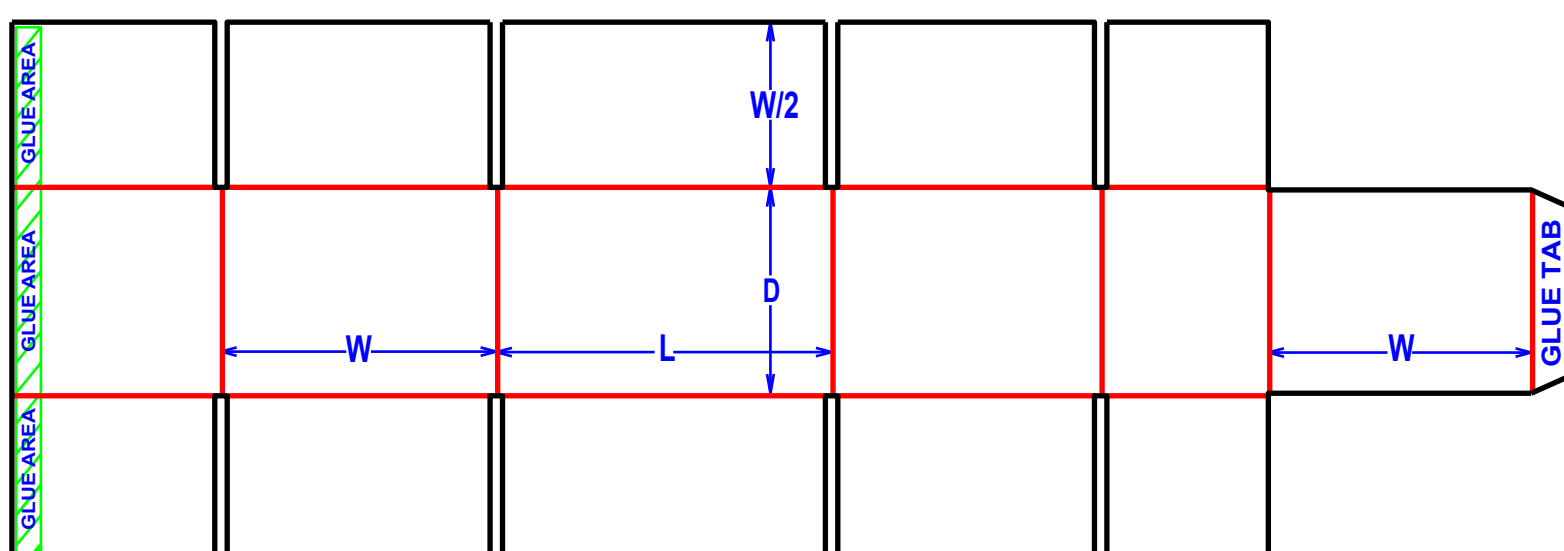
4. Lower panel into assembled bottom



## F0228 Divided RSC

Tooling Required

— - Cut Line  
— - Score Line



### RSC - Divided Length

A container with flaps cut to half the width of the box, allowing for the major flaps to meet in the center of the width for taping. Extra panel glues inside container, dividing the length in half when erected, creating a built in divider.

Major Flaps Minor Flaps

